

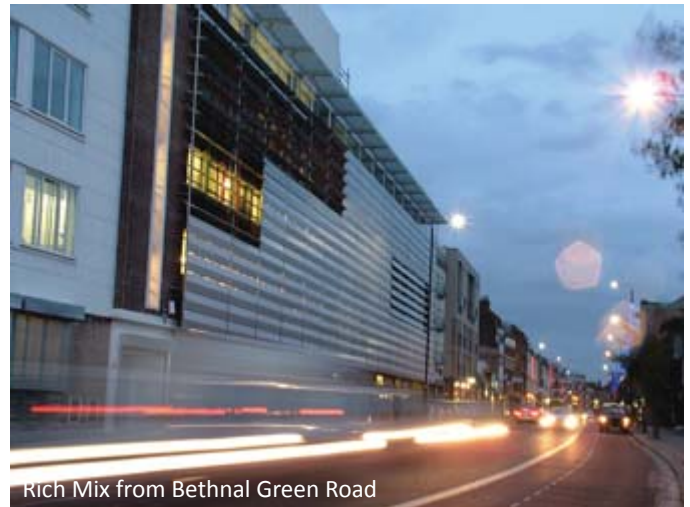
Client	Rich Mix
Main Contractor	Mansell
Architect	Penoyre & Prasad
Acoustic Consultant	Paul Gillieron Acoustic Design
Structural Engineer	Ove Arup & Partners
Details	Studios CDM-MONT-LF: 328m²
	Cinemas CDM-LAT: 857m²

• The Rich Mix Cultural Foundation promotes intercultural understanding and the contribution that successive generations of immigrants have made to the economic and cultural life of London. The Rich Mix has many facilities including auditoria, studios, cinemas and other function areas. The site is located directly above the Central Line underground tunnels and trains were clearly audible in the existing building before refurbishment.

• The acoustic consultant specified that the sensitive spaces, such as the auditoria and recording studios, needed to be isolated on sprung jack-up floating floors. The CDM-MONT-LF-150 jacks were used with 4Hz springs and the 150mm thick slabs were jacked up between 50mm and 125mm depending on the sensitivity of the rooms.

• Lower sensitivity rooms were isolated on high performance elastomers provided by the CDM-ISOLAT system.

• The finished project provides a high level of protection from re-radiated noise from the Central Line trains and also maximises sound separation between adjacent rooms.



Rich Mix from Bethnal Green Road



CDM-WH wall tie



CDM-MONT jack



Cinema being used as a conference venue