

# KPMG, Canary Wharf, London, UK

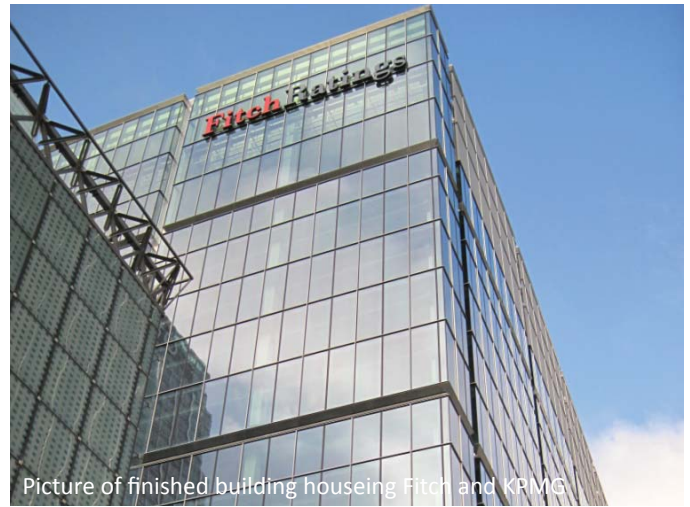
CDM-MACHINE-FLOAT & MONT, CDM-MACHINE-FIX



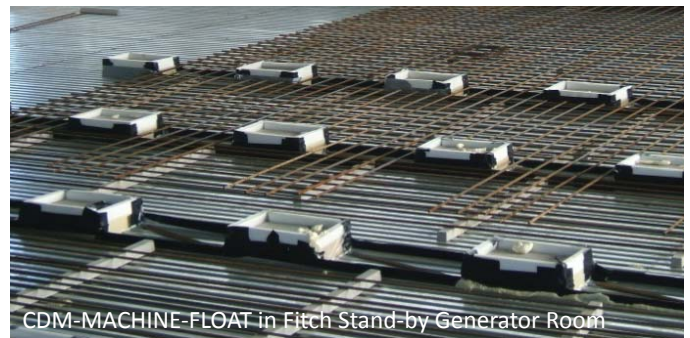
**Main Contractor**  
**Architect**  
**Acoustic Consultant**  
**Structural Engineer**  
**Generator Suppliers**  
**Details**

**Canary Wharf Contractors**  
**Adamson Associates**  
**Sandy Brown Associates**  
**WSP Cantor Seinuk**  
**Finnings + Broadcrown**  
**2 plant rooms = 536m<sup>2</sup>**

- A large shared office development in Canary Wharf is the new HQ for KPMG whilst also being occupied by Fitch Ratings.
- Each half of the building has it's own large plant room, located at the top of the building, to house the standby generators.
- Fully isolated rooms were required to control sound transmission to other areas of the building.
- One plant room is supported off a CDM-MACHINE-MONT-150 jack-up concrete floating floor;
- The other is supported off a CDM-MACHINE-FLOAT 100mm thick concrete floating floor which included failsafes to allow the heavy generator to be moved across the floor without causing structural damage to the slab.



Picture of finished building housing Fitch and KPMG



CDM-MACHINE-FLOAT in Fitch Stand-by Generator Room



CDM-MACHINE-MONT in KPMG Stand-by Generator Room



CDM-MACHINE-FIX springs being installed under Generator

Industry

Project Reference