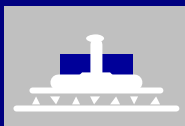
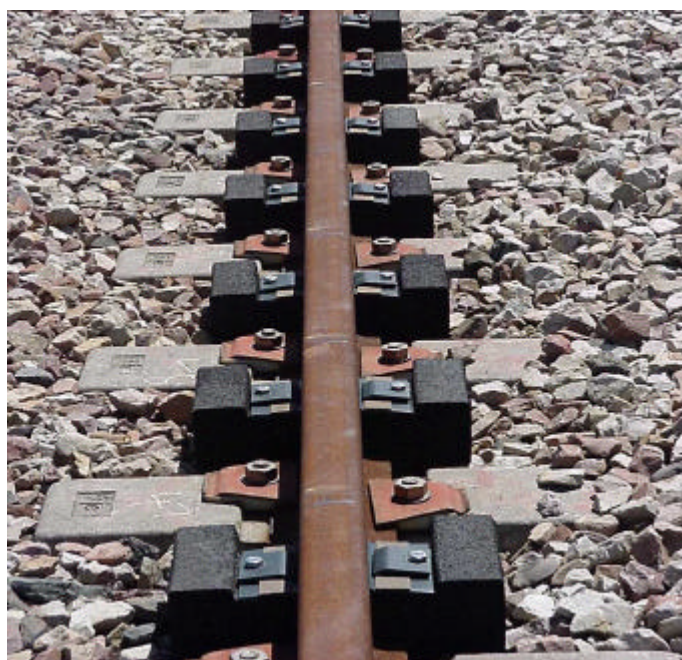
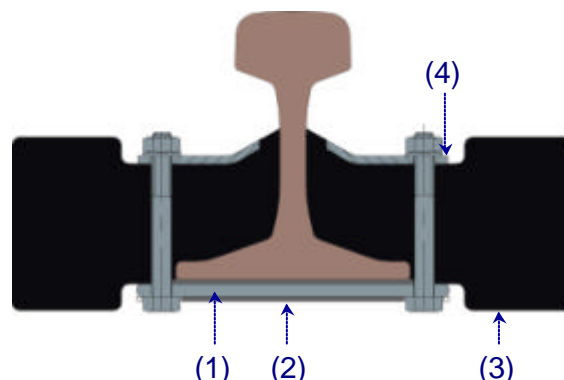


CDM-ABSO-RAIL®



Rail Noise Absorber

The **CDM-ABSO-RAIL®** system is designed to damp the 'pin-pin' resonance peaks in ballasted tracks, bridge structures, tunnels, etc... Without treatment, the pin-pin vibration modes of the rail will reradiate a high volume of noise which will sometimes be unacceptable in nearby areas. (significant spectrum: 850 Hz - 2000 Hz).

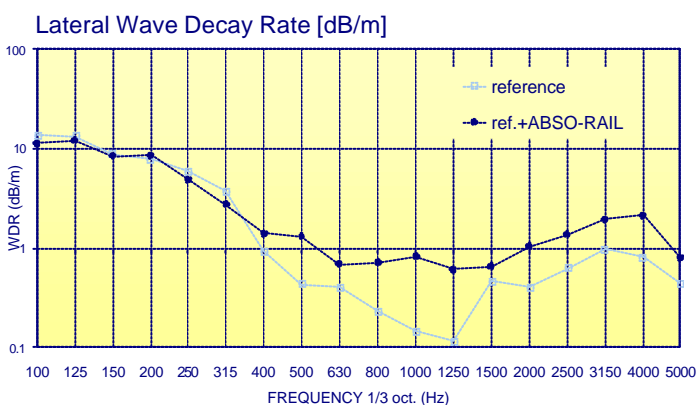
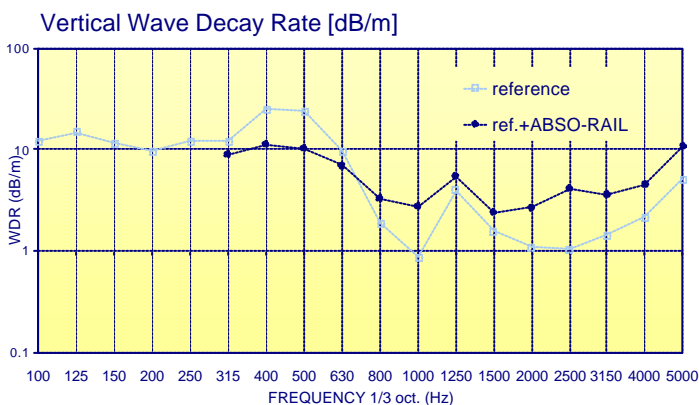


Components:

- Steel bottom plate (1)
- High damping material, covering the steel plate at both sides (2)
- Composite rubberblocks (3)
- Steel top plate and bolt, to press the rubberblocks firmly against the rail (4)

Advantages:

- The **CDM-ABSO-RAIL®** ensures considerable wave decay rates in the important frequency range (see graphs below)
- Straightforward installation
- The shape of the absorber elements can be adapted to the railtype as well as to the project requirements



CDM-ISO-TRACK

CDM-UK
 PO Box 7035
 Melton Mowbray
 Leics LE13 1WG



noise & vibration control

T: + 44 (0) 1664 482486
 F: +44 (0) 1664 482487
 E: info@cdm-uk.co.uk
 www.cdm-uk.co.uk