

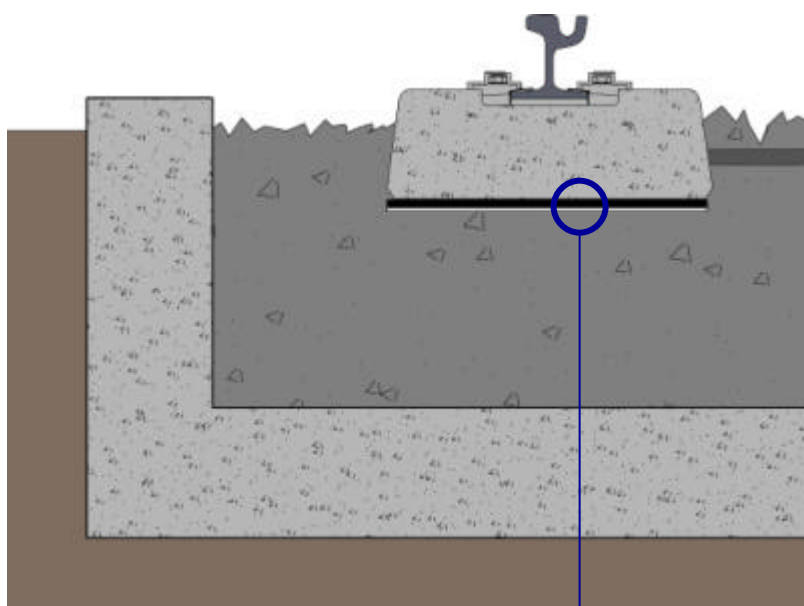
CDM-ISO-USM



Level 2 Intervention Under-Sleeper-Mat



The **CDM-ISO-USM** Under-Sleeper-Mats are placed under the sleepers of an existing or newly built ballasted track, to ensure isolation against vibrations due to rolling stock, specially in the important frequency range (31.5-125 Hz).

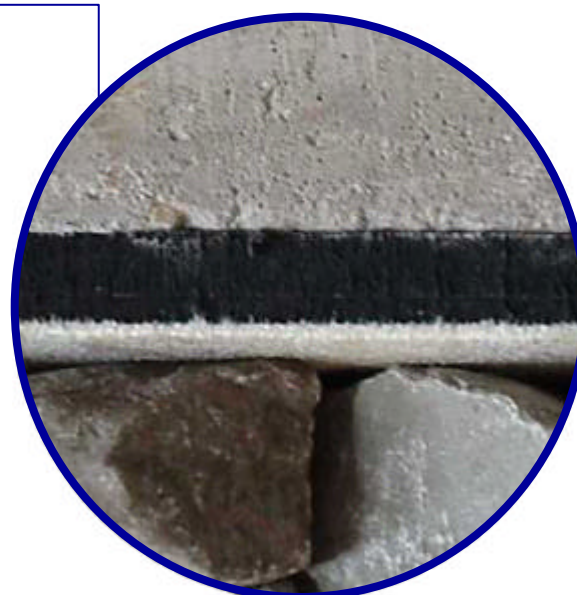


Advantages:

- CDM will design **CDM-ISO-USM** Under-Sleeper-Mats to meet the specific requirements of each job
- **CDM-ISO-USM** guarantees isolation improvements of between 10 and 15 dBV, when compared to the non-isolated track
- **CDM-ISO-USM** is extremely easy to install
- **CDM-ISO-USM** does not cause any additional airborne noise.

Components:

- An *isolation layer*, selected from CDMs large range of materials, to fulfill the specific isolation needs of the project. This layer is glued to the underside of the sleeper
- A *protection layer*, that ensures the protection of the isolation layer against the ballast. This layer is glued to the above mentioned
- It is important to notice that the **CDM-ISO-USM** system can be custom made to meet the complexity of the situation



CDM-ISO-TRACK

CDM-UK
PO Box 7035
Melton Mowbray
Leics LE13 1WG



noise & vibration control

T: + 44 (0) 1664 482486
F: +44 (0) 1664 482487
E: info@cdm-uk.co.uk
www.cdm-uk.co.uk