

CDM-ISO-UBP

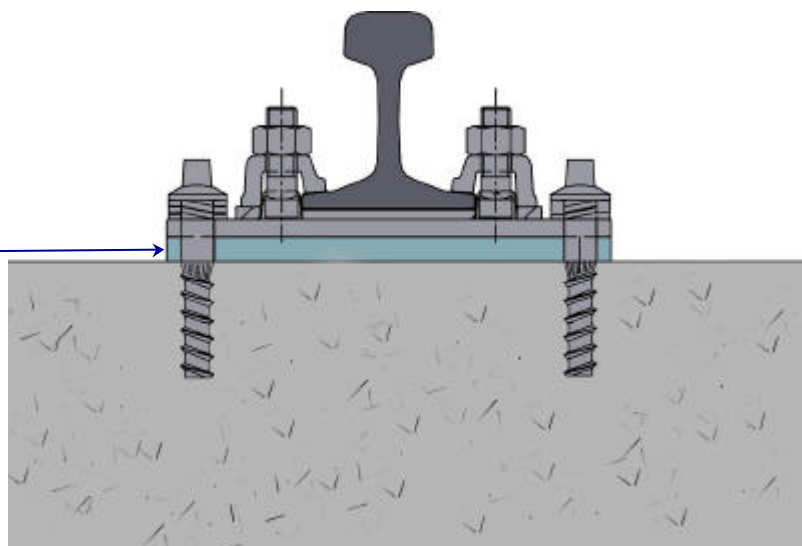


Level 2 Intervention Under-Base-Plate Pad



The **CDM-ISO-UBP** Under-Base-Plate pad is designed to reduce the transmission of vibration, generated by trams and trains, from the rail into the ground.

It can be easily installed under the base-plate of existing or newly built tracks, with direct fastening on a concrete slab.



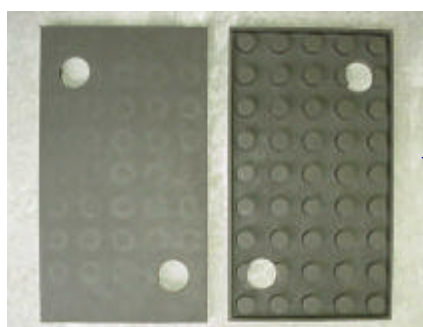
Components:

The type of high resilient material used, the size, shape, thickness and profile of the **CDM-ISO-UBP** Under-Base-Plate pad is dependent on project specific requirements, such as dynamic to static stiffness ratio and maximum allowable deflection.

The fixings can be decoupled from the base-plate by means of an isolating washer.

Advantages:

- CDM will design the **CDM-ISO-UBP** Under-Base-Plate pad to meet the requirements of each specific job
- The **CDM-ISO-UBP** achieves isolation insertion losses of between 8 and 12 dBV
- The use of **CDM-ISO-UBP** increases the life of the rail support structure
- Straightforward installation



CDM-ISO-TRACK

CDM-UK
PO Box 7035
Melton Mowbray
Leics LE13 1WG



noise & vibration control

T: + 44 (0) 1664 482486
F: +44 (0) 1664 482487
E: info@cdm-uk.co.uk
www.cdm-uk.co.uk