

CDM-ISO-RAILPAD/STRIP



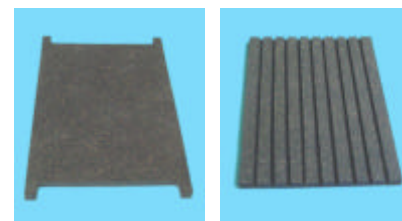
Level 1 Intervention Resilient Railpads and Railstrips



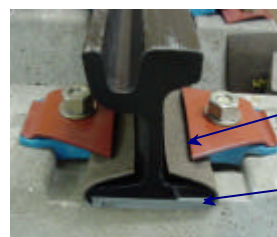
CDM designs and manufactures resilient railpads and railstrips to meet any performance requirements. Following are the **standard basic types**:

The **CDM-ISO-SRP**, or simple railpad is placed immediately under the rail.

- **CDM-ISO-SRP** reduces vibrations generated by trams, trains, underground and cranes
- Isolation improvements between 3 and 6 dBV
- **CDM-ISO-SRP** can be designed to fit any rail type and fixing method
- Easy to install under existing and new-built tracks
- **CDM-ISO-SRP** increases the life of both rail and sleeper

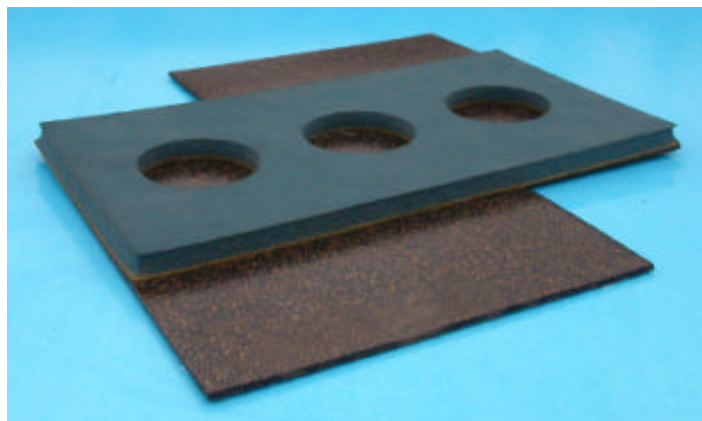


The **CDM-ISO-DPHI** is a double flapped railpad. The flaps act as a sound-stop between railfoot and fastener and add damping, thus limiting the noise radiating length of the rail.



The pad consists of **two components**:

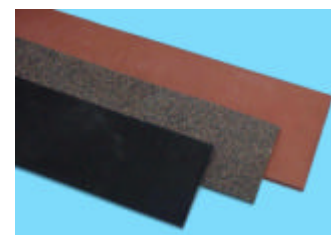
- *The flaps, made of a high-tensile compound*
- *A high resilient pad*



Extra advantages (with respect to **CDM-ISO-SRP**):

- Improvements of up to 8dBV (insertion loss)
- Reduction of reradiated noise
- The **CDM-ISO-DPHI** railpad can be custom-made to satisfy project requirements

The **CDM-ISO-SRS** or simple railstrip provides a continuous support for the rail, thereby resulting in significant reductions of the reradiated noise and reducing rail corrugation effects.



CDM-ISO-TRACK

CDM-UK
PO Box 7035
Melton Mowbray
Leics LE13 1WG



noise & vibration control

T: + 44 (0) 1664 482486
F: +44 (0) 1664 482487
E: info@cdm-uk.co.uk
www.cdm-uk.co.uk