

CDM-ISO-POROTRACK®



Embedded Rail Poured Elastomer Solution



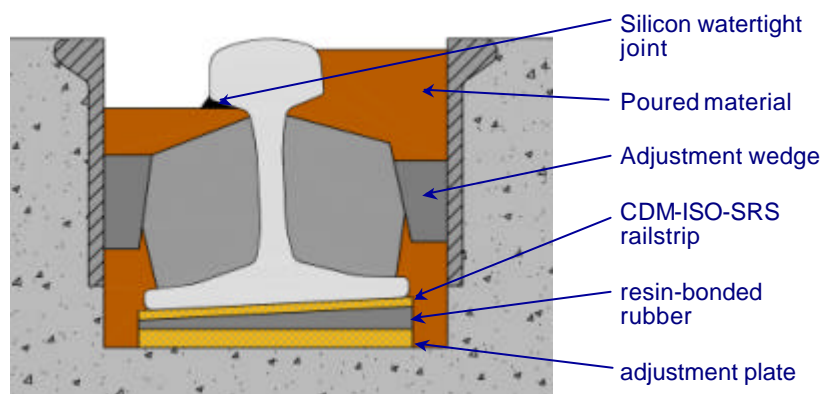
The **CDM-ISO-POROTRACK®** is a poured elastomer solution that is used to provide vibration isolation for embedded track. The rail is continuously supported horizontally and vertically.

CDM-ISO-POROTRACK® can be used to support rails for heavy as well as light rail-transport, level crossings and turnouts, rail systems on bridges, tunnels etc...

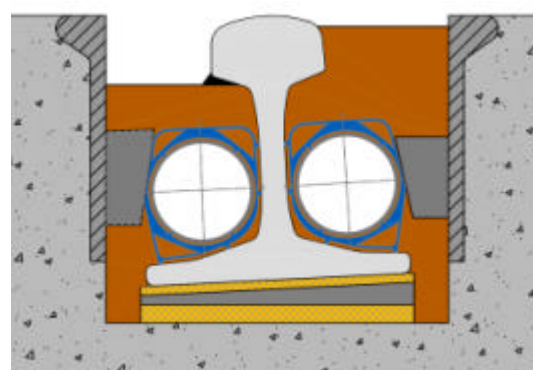
There are two basic setups of **CDM-ISO-POROTRACK®** with **CDM-FLEXIWEB** resin-bonded rubber filling, or with PVC tubes (possible integration of cabling).



view after installation



CDM-FLEXIWEB



with PVC tubes

Advantages:

- **CDM-ISO-POROTRACK®** allows the vibration isolation performance to be tuned by changing the stiffness of the **CDM-ISO-SRS** resilient railstrip under the rail
- Considerable reduction of the re-radiated noise
- The continuous support of the rail, combined with the **CDM-ISO-POROTRACK®** system guarantees a uniform elasticity in the length direction of the track, thus prolonging the life of the rail and minimising corrugation
- Constant geometry, even after many years of intensive use
- Considerable savings due to reduced construction height and weight (e.g. tunnels and bridges)
- Low maintenance



view on installation with PVC tubes

CDM-ISO-TRACK

CDM-UK
PO Box 7035
Melton Mowbray
Leics LE13 1WG



noise & vibration control

T: + 44 (0) 1664 482486
F: +44 (0) 1664 482487
E: info@cdm-uk.co.uk
www.cdm-uk.co.uk