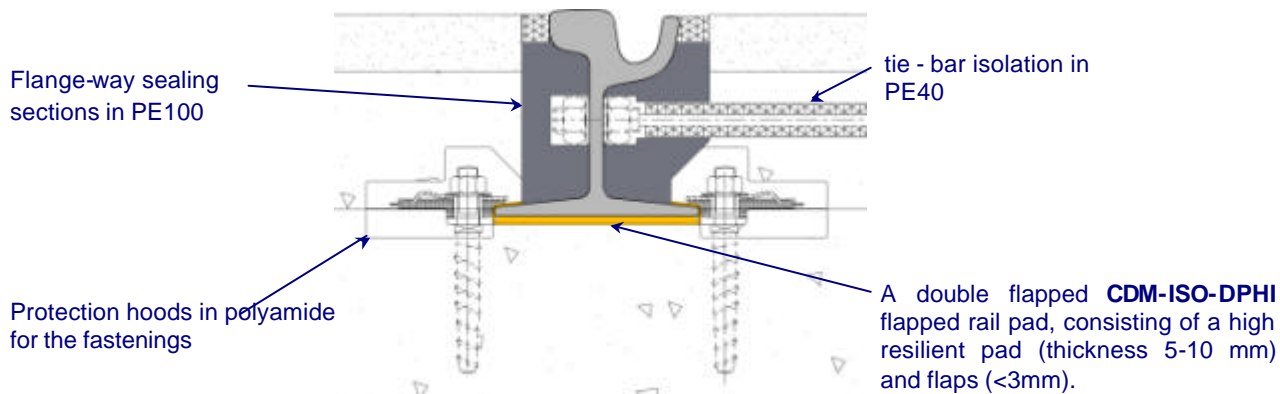
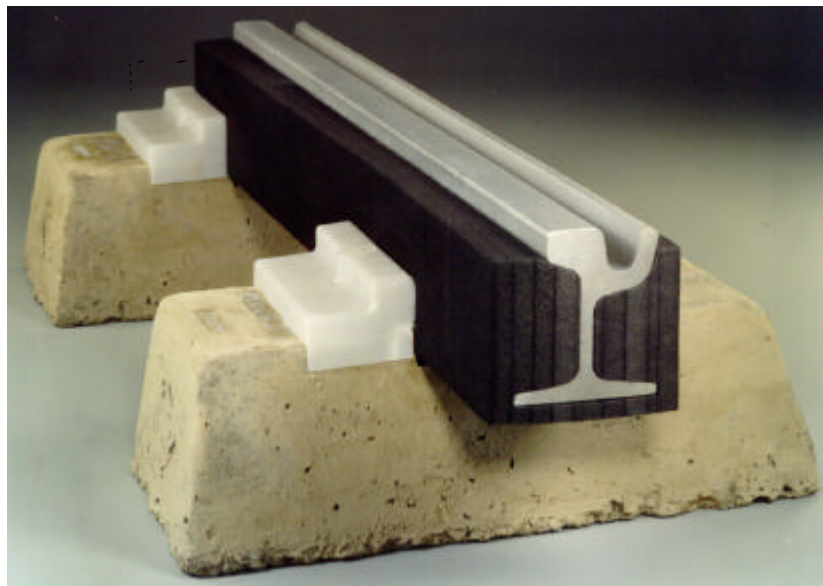


CDM-ISO-DPHI-E



Embedded Rail Using Flapped Rail Pad

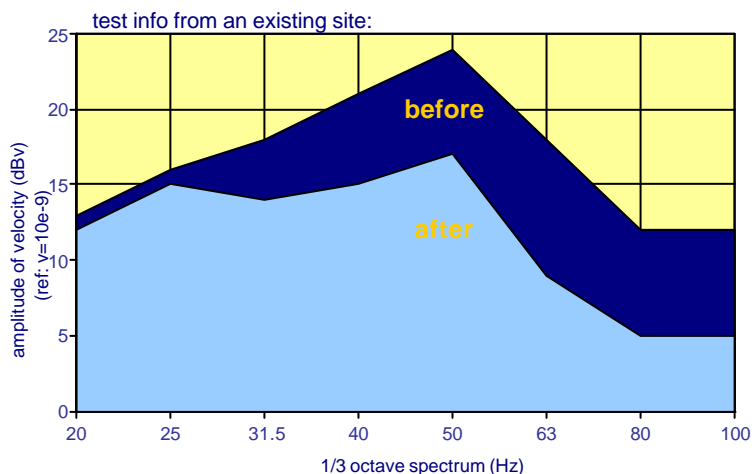
- **CDM-ISO-DPHI-E** is a specially designed vibration isolation system for embedded tracks
- Minimises noise radiated from the track
- Excellent solution for improving the insertion loss performance of existing tracks
- Designed to ensure insertion losses between 6 and 12 dBV (in the predominant excitation frequency area) compared to the classic non - isolated track
- Solves stray current issues
- Straightforward installation
- The system system can be designed to accommodate site specific characteristics and performance requirements



installation



after the works



CDM-ISO-TRACK

CDM-UK
 PO Box 7035
 Melton Mowbray
 Leics LE13 1WG



T: + 44 (0) 1664 482486
 F: +44 (0) 1664 482487
 E: info@cdm-uk.co.uk
 www.cdm-uk.co.uk