

CDM-ISO-COCONTRACK®



Embedded Rail Continuously Supporting Sleeper



CDM-ISO-COCONTRACK® consists of a novel sleeper design that provides a continuous support surface for the vibration isolation strips and embedded rail jackets, and uses classic track fastenings.



CDM-ISO-COCONTRACK® has the following advantages over standard ballasted track:

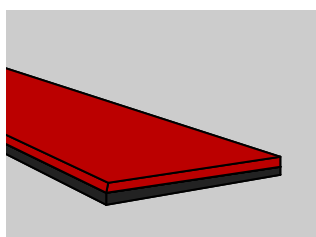
- Extremely low re-radiated noise levels from the track (>6dB reduction)
- Important decrease of structure-borne vibration levels (insertion losses up to 15 dBV)
- Multi - modal traffic use of the track
- Elimination of rail-corrugations
- Fasteners are spaced at 1.2m centres instead of the standard 0.6m spacings, therefore only half the number of fixings are required
- The system is totally adaptable to the project specific characteristics (e.g. track curves)

Components:



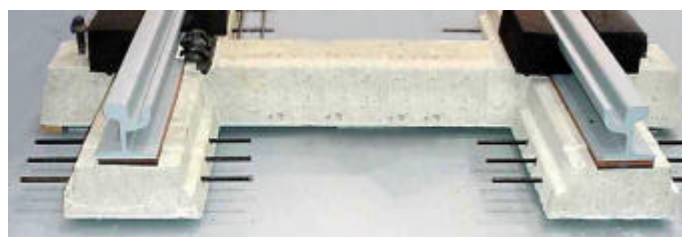
CDM-FLEXIWEB (1),

Rail-web-chambers in resin-bonded rubber, prefabricated and shaped according to the railytype.



CDM-BISTRIPS (2),

To provide the vibration isolation and structure-borne noise isolation, and to absorb the tolerances of the support surface



CDM-COCON Sleeper (3),

A novel pre-fabricated H-shaped concrete sleeper that has an integrated track alignment system. The sleeper system provides a continuous support surface for the rails

CDM-ISO-TRACK

CDM-UK
PO Box 7035
Melton Mowbray
Leics LE13 1WG



noise & vibration control

T: + 44 (0) 1664 482486
F: +44 (0) 1664 482487
E: info@cdm-uk.co.uk
www.cdm-uk.co.uk