

# CDM-ISO-FIX-POST

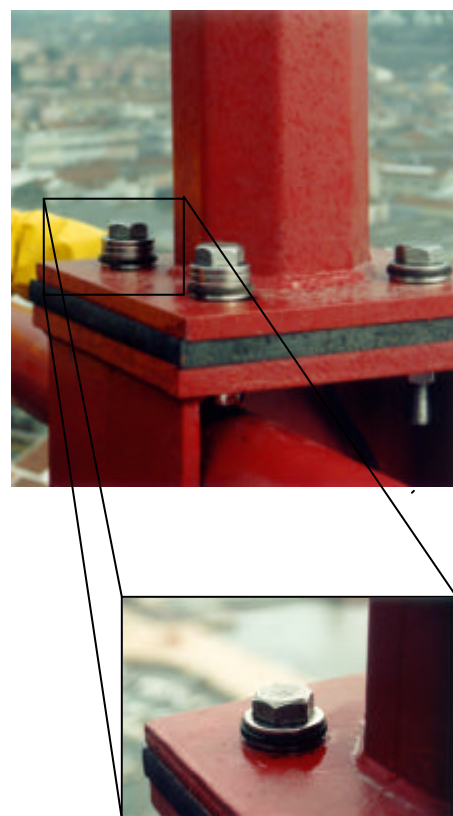
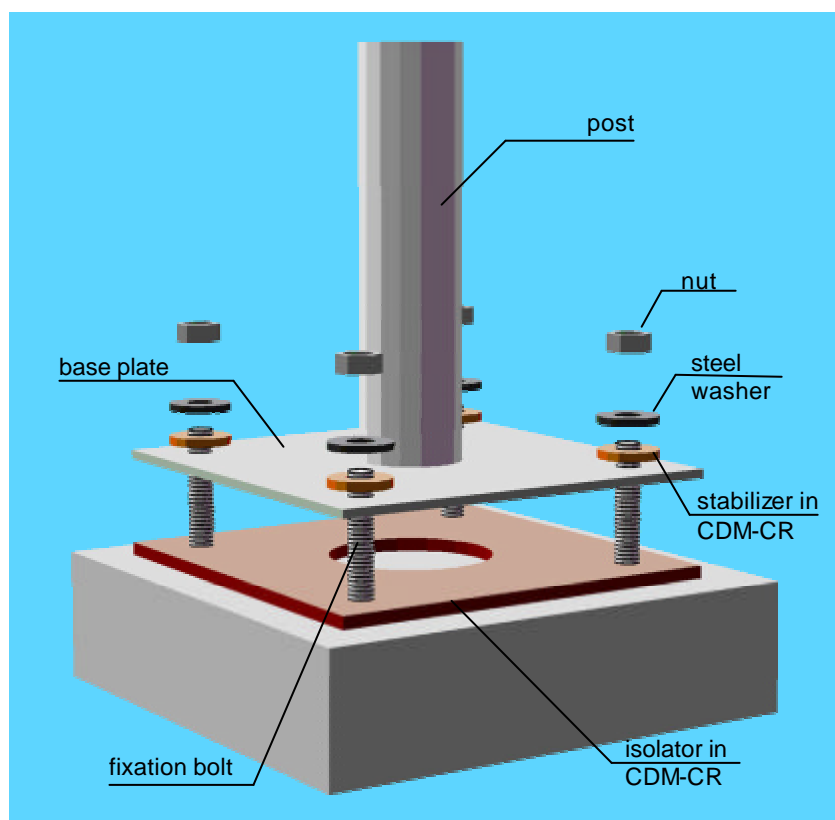


Vibration isolation and levelling device for columns, posts & signs



The **CDM-ISO-FIX-POST** system offers a simple cost effective method of installing columns where there is horizontal and vertical un-evenness or irregularities in the foundation or base plate. The system is manufactured from high performance cork/elastomer and micro-cellular rubber materials which have been used in ISO-FIX products since 1951. The main benefits of the system are:

- simple levelling device
- the reduction of vibration thereby prolonging lamp life
- a guaranteed product life in excess of 25 years
- quick and easy column installation
- ideal for bridge applications



In order to assess the correct grade and thickness of CDM material for your application the following information is useful:

- Dimensions of column base plate
- Location and dimensions of fixations bolts, including diameter
- Vertical tolerance of column
- Degree of horizontal and vertical un-evenness
- Maximum bending moment at base of column
- Shear force at base of column
- Column height

#### Physical characteristics

Temperature range: - 40°C to +100°C

Excellent electrical resistivity

Chemical resistance - detailed list available

Resistant to micro-organisms, insects, rodents

Ozone resistant

## CDM-ISO-LEVEL

CDM-UK  
PO Box 7035  
Melton Mowbray  
Leics LE13 1WG



noise & vibration control

T: + 44 (0) 1664 482486

F: +44 (0) 1664 482487

E: info@cdm-uk.co.uk

www.cdm-uk.co.uk