

CDM-ISO-T-MARINE



Sound Insulation for Bulkheads Resilient Sound Insulation Batten

CDM-ISO-T-MARINE Resilient Sound Insulation Battens are designed to optimise the sound insulation of bulkheads and walls in luxury boats and yachts. The battens are direct fixed to the existing structure and then **CDM-ISO-CORE-MARINE** boards can then be fixed to the battens.

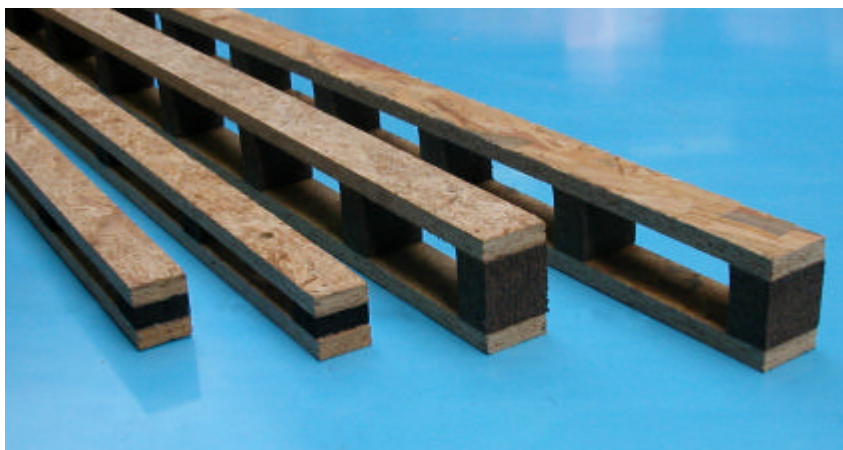
Two standard types are available

- **CDM-ISO-T-MARINE-56**, creates 56mm void
- **CDM-ISO-T-MARINE-96**, creates 96mm void

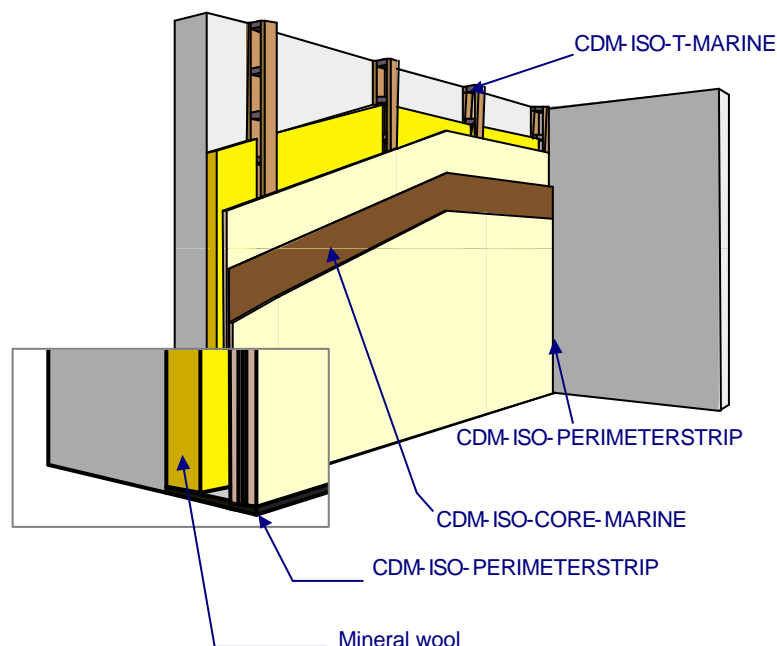
Other void depths available on request

Advantages

- optimises sound insulation for bulkheads and walls
- very light
- easy to install



Installation of the CDM-ISO-T battens



Installation guidelines: 1. Install perimeter and base isolation strips (**CDM-ISO-PERIMETERSTRIP**); 2. Fix **CDM-ISO-T-MARINE** batten to the wall at approximately 600mm centres to match the joints of the first layer of plasterboard or wall board; 3. Install low density mineral fibre between battens; 4. Fix **CDM-ISO-CORE-MARINE** boards to the battens; 5. Apply finish treatment.

CDM-ISO-MARINE

CDM-UK
PO Box 7035
Melton Mowbray
Leics LE13 1WG



noise & vibration control

T: + 44 (0) 1664 482486
F: +44 (0) 1664 482487
E: info@cdm-uk.co.uk
www.cdm-uk.co.uk