

CDM-ISO-PHS/PHR

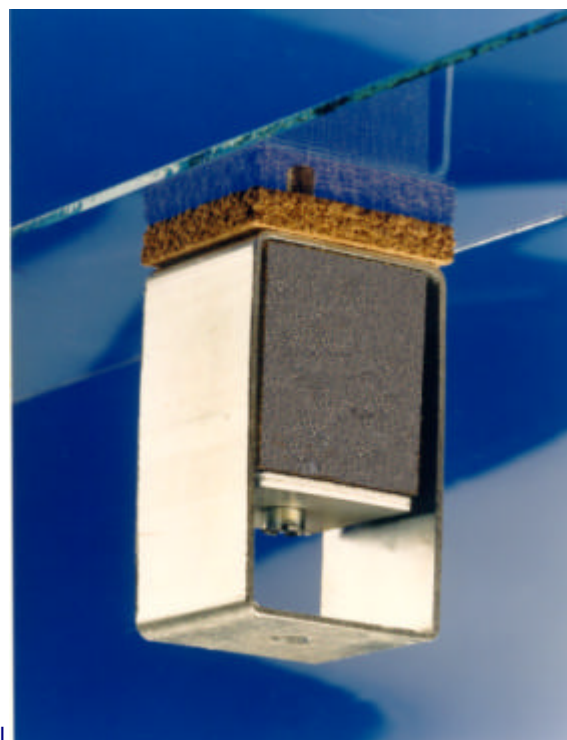


Resilient Hangers for Pipes and for Other Mechanical Equipment

CDM-ISO-PHS/PHR Resilient Hangers are designed to suspend heavy ceilings, walls, lighting rigs, ducts and pipework. By isolating these elements from the main structure sound insulation and vibration isolation is maximised.

The choice between **CDM-ISO-PHS** and **CDM-ISO-PHR** depends on the required resonance frequency and the applied load.

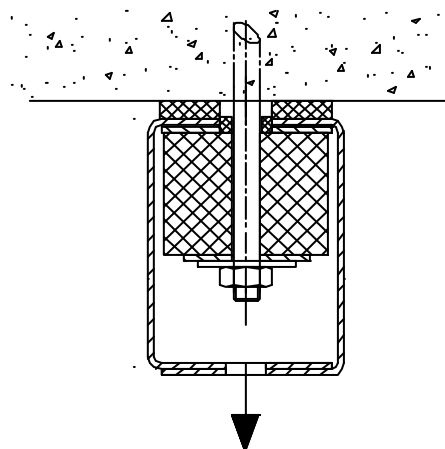
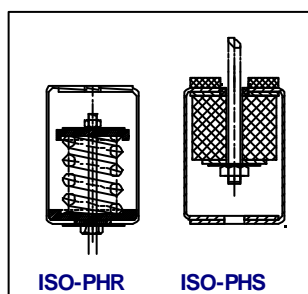
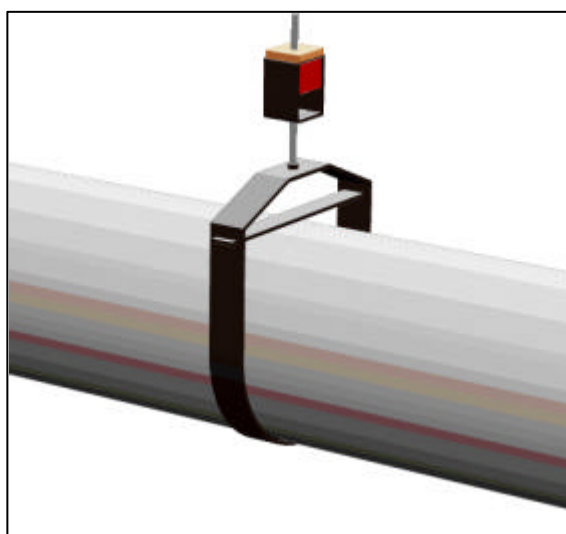
f_{res} [Hz]	Type	Optimal Load per element [N]
ca. 8 – 10 Hz	ISO-PHS-150	150 (100-250)
	ISO-PHS-500	500 (250-600)
	ISO-PHS-1000	1000 (600-1000)
	ISO-PHS-1400	1200 (1000-1800)
ca. 4 – 5 Hz	ISO-PHR-150	150 (120-180)
	ISO-PHR-500	500 (400-600)
	ISO-PHR-1000	1000 (800-1200)
	ISO-PHR-2000	2000 (1600-2400)



Hangers can be manufactured to take any load and to achieve other natural

Installation Guidelines

CDM-ISO-PERIMETER-STRIP should be used around the perimeter of the ceiling to ensure that the suspended elements are acoustically de-coupled from the supporting structures.



CDM-ISO-INDUSTRY

CDM-UK
PO Box 7035
Melton Mowbray
Leics LE13 1WG



noise & vibration control

T: + 44 (0) 1664 482486
F: +44 (0) 1664 482487
E: info@cdm-uk.co.uk
www.cdm-uk.co.uk