

CDM-ISO-ELEVATOR-FIX

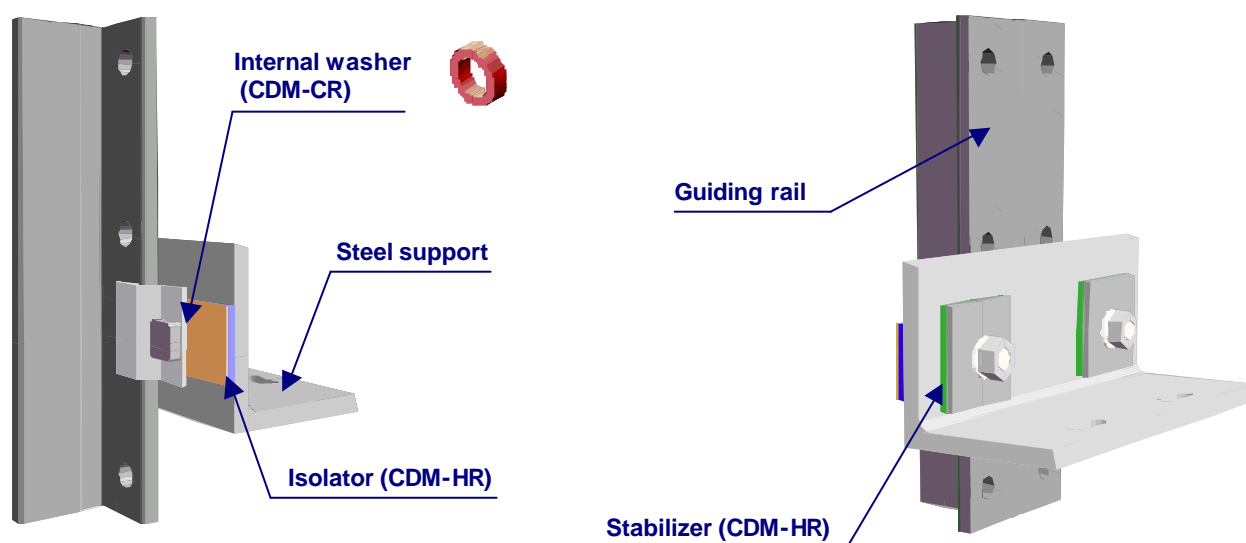


Guiding Rail Decoupling for Elevators



As elevators travel up and down a building they transmit vibration and noise into the structure, often creating disturbance to noise sensitive spaces such as bedrooms, meeting rooms etc. The main source of vibration transmission is via the guiding rails. **CDM-ISO-ELEVATOR-FIX** is a system that decouples the guiding rails from the shaft structure, hence significantly reducing the transmitted energy.

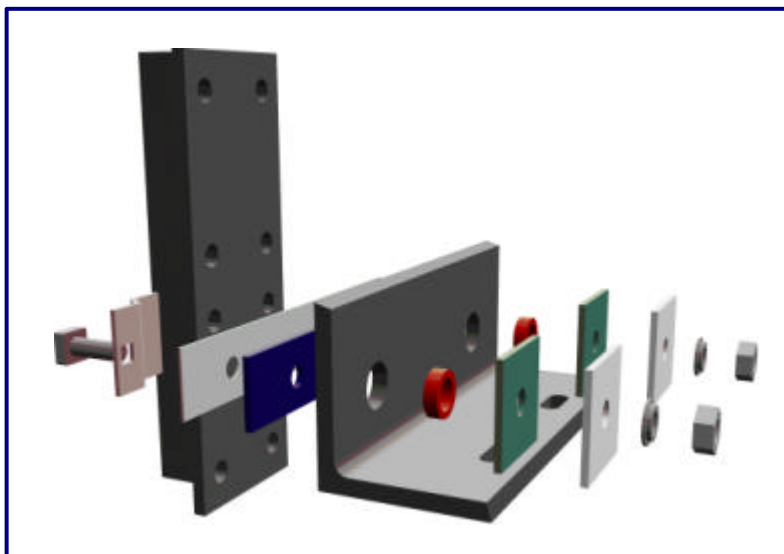
Improvements of re-radiated noise levels to adjacent spaces can be expected to be 5 to 10dB.



System components:

- the isolator
- the stabilisers
- the flexible washers

The type, size, shape and thickness of these elements depends on the lift type, applied forces, performance requirements and other job specific criteria.



CDM-ISO-INDUSTRY

CDM-UK
PO Box 7035
Melton Mowbray
Leics LE13 1WG



noise & vibration control

T: + 44 (0) 1664 482486
F: +44 (0) 1664 482487
E: info@cdm-uk.co.uk
www.cdm-uk.co.uk