

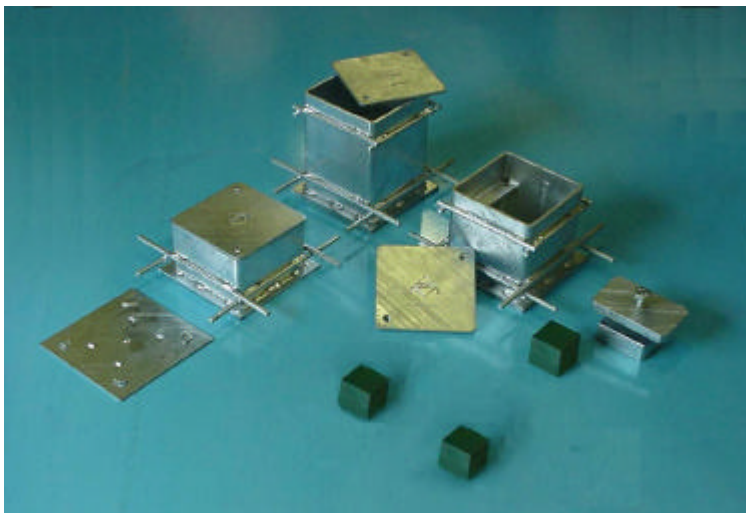
CDM-ISO-MONT



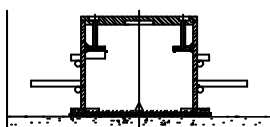
Jack-up Floating Floor System with replaceable bearings

CDM-ISO-MONT Jack-Up Floating Floor System guarantees acoustic de-coupling of floating floors with spring and elastomer isolator performances ranging from 3-7Hz. Due to the unique design the system allows for the bearings to be fully replaceable.

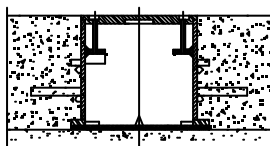
The system can be designed to take heavy loads and can be jacked up before or after these loads are applied.



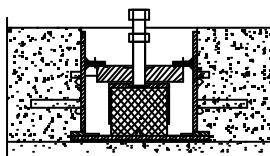
Installation



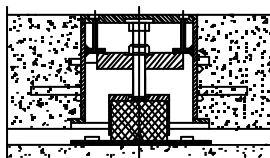
1. Installation of the boxes



2. Pouring of the concrete

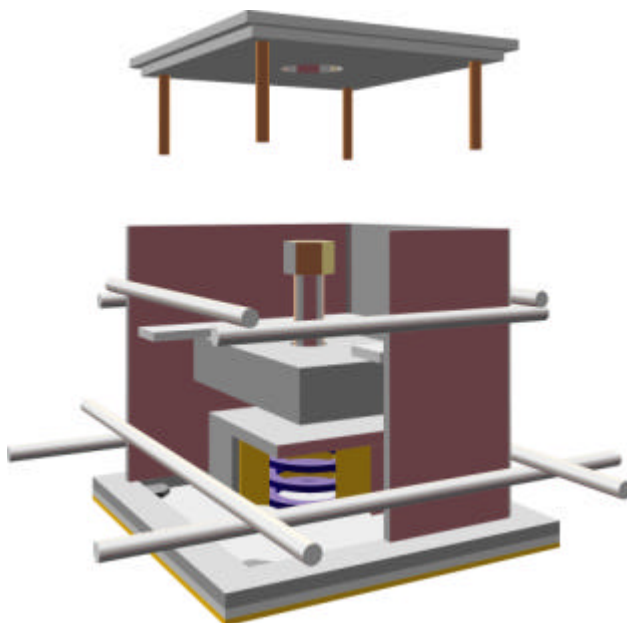


3. Inserting the bearings



4. Lifting the floor slab and closing the boxes

The system allows three standard concrete slab thicknesses, 100mm, 150mm and 200mm (other thicknesses available on request), and also any air void beneath the slab.



Exploded 3D view of ISO-MONT-LF-150 box



The boxes with reinforcement



Ready for jacking



Jacking up the slab

CDM-ISO-FLOOR

CDM-UK
PO Box 7035
Melton Mowbray
Leics LE13 1WG



T: + 44 (0) 1664 482486
F: +44 (0) 1664 482487
E: info@cdm-uk.co.uk
www.cdm-uk.co.uk