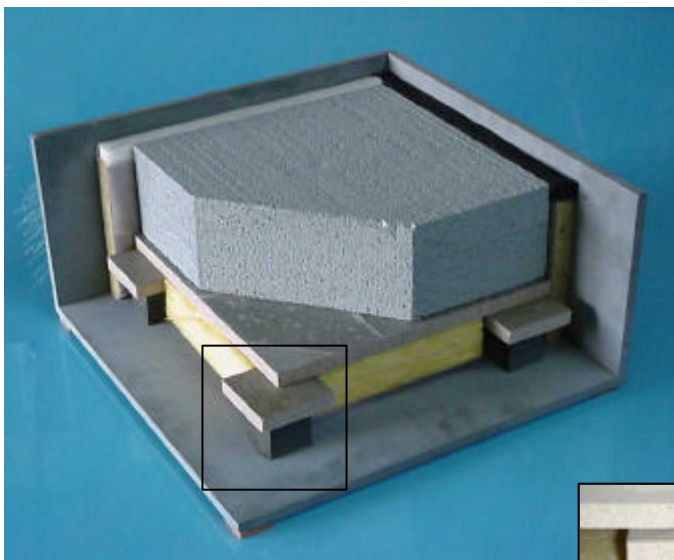


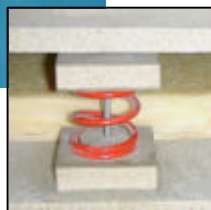
CDM-ISO-FLOAT



Floating Floor Discrete Isolator System



CDM-ISO-FLOAT build-up with springs or elastomer pads

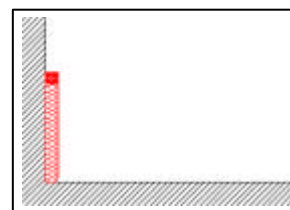


CDM-ISO-FLOAT is a pre-manufactured, ready-to-install system for concrete floating floors. The system consists of springs or elastomer pads glued to the underside of formwork panels along with mineral fibre sound absorption, lateral isolation and a waterproof polythene membrane.

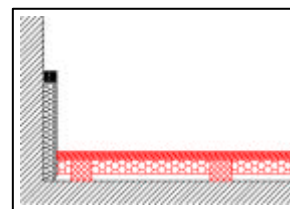
Information required by CDM to carry out the design of the **CDM-ISO-FLOAT** system:

- Imposed dead and live loads on the floor
- Performance requirements, eg. natural frequency or sound insulation criteria

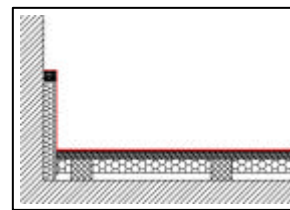
Installation



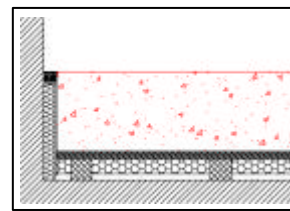
1. Lateral isolation



2. CDM-ISO-FLOAT panels



3. Waterproof membrane

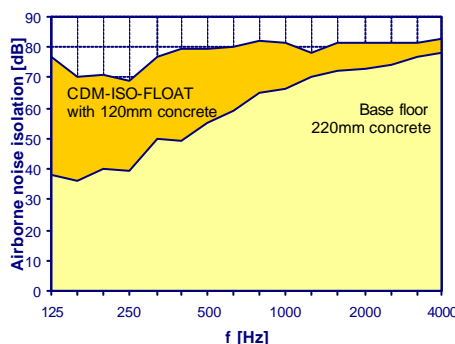
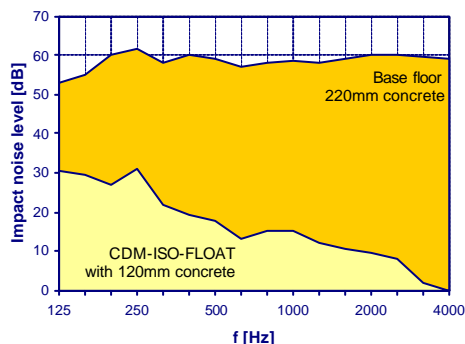


4. Concrete slab + finishing

The advantages of the **CDM-ISO-FLOAT** system are as follows:

- System comes with full design drawings and is extremely quick and easy to install
- Optimises sound insulation
- The air void beneath the floor can be varied to tune the system natural frequency
- Available with **CDM-ISO-CHR** springs (3-5Hz) or **CDM-ISO-CDM** elastomer pads (6-15Hz)

Example: 120mm concrete floating floor, spring isolators, 220mm base concrete floor



CDM-ISO-FLOOR

CDM-UK
PO Box 7035
Melton Mowbray
Leics LE13 1WG



noise & vibration control

T: + 44 (0) 1664 482486
F: +44 (0) 1664 482487
E: info@cdm-uk.co.uk
www.cdm-uk.co.uk