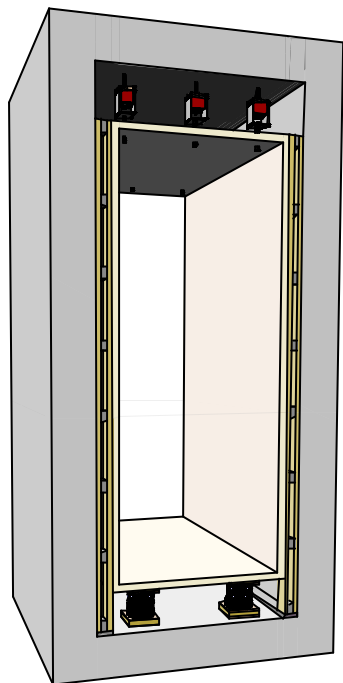


# CDM-ISO-BOX



## Box-in-Box Systems



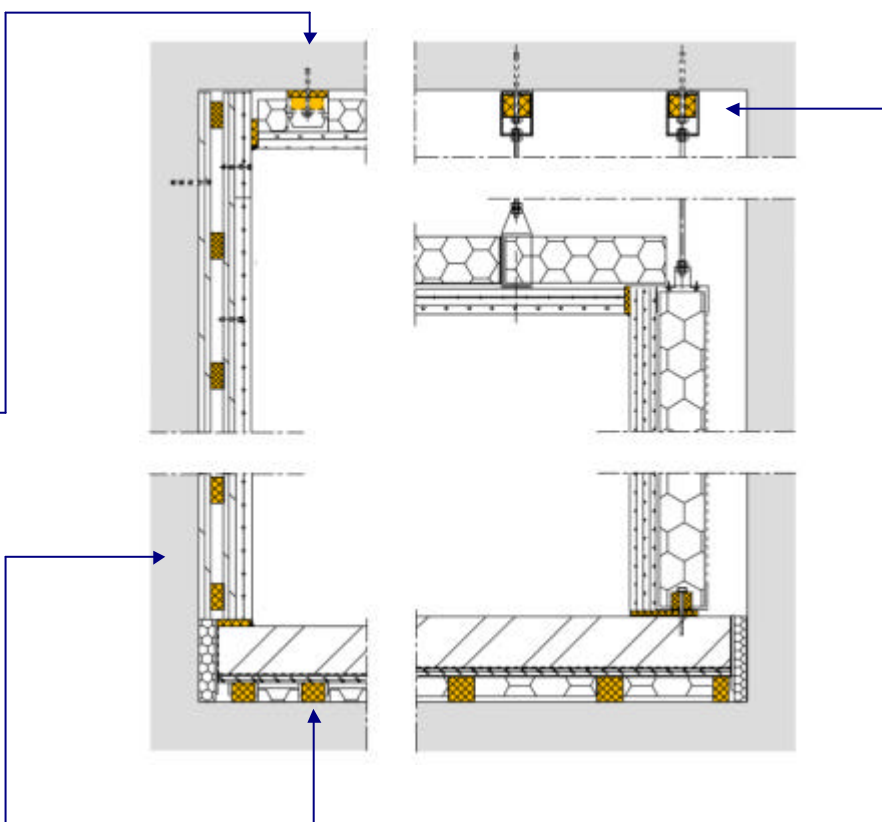
CDM-ISO-BOX

The 'Box-in-Box' concept is based on the complete decoupling of floors, walls and ceilings from the building structure to achieve the maximum isolation possible.

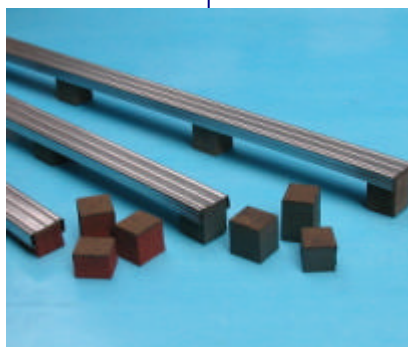
CDM-ISO-BOX uses a combination of CDM-ISO-FLOOR and CDM-ISO-WALL and CDM-ISO-CEILING to create high-performance box-in-the-box systems. Airborne and structure-borne noise improvements of more than 30 dB can be achieved.



CDM-ISO-CC



CDM-ISO-T



CDM-ISO-LAT



CDM-ISO-PHS

## CDM-ISO-BUILDING

CDM-UK  
 PO Box 7035  
 Melton Mowbray  
 Leics LE13 1WG



noise & vibration control

T: + 44 (0) 1664 482486  
 F: +44 (0) 1664 482487  
 E: info@cdm-uk.co.uk  
 www.cdm-uk.co.uk