

BBC Egton House

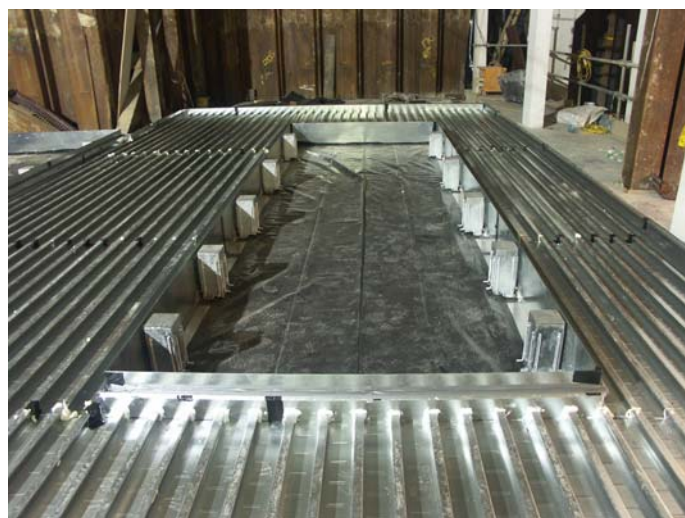
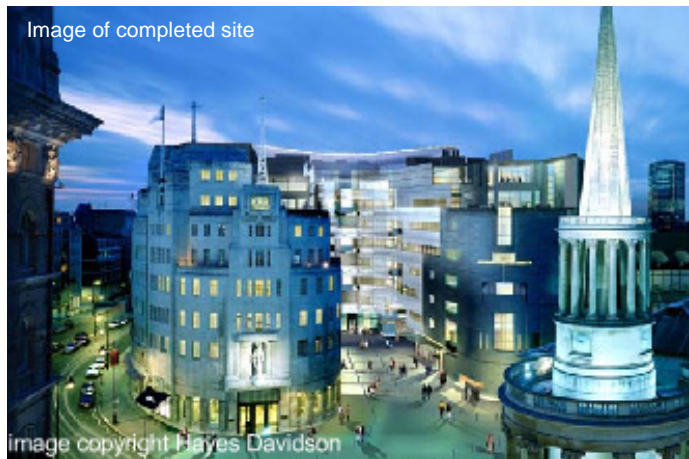


Sprung Inertia Base
CDM-ISO-MONT-350



Client BBC
Main Contractor Bovis LendLease
Architect McCormac Jamieson Pritchard
Acoustic Consultant Bickerdike Allen Partnership
Structural Engineer Whitby Bird & Partners
Area 2 no. inertia bases 30m²

Egton House is one of the new buildings directly adjacent to the famous Broadcasting House on Portland Place, just north of Oxford Circus in the heart of London's West End. The sub-basement of the new building houses the stand-by generators for the whole of Broadcasting House. This consists of 2 no. 30 tonne generators which when running generate very high levels of noise and vibration.



Each generator sits on a 350mm thick inertia base that has been jacked up 50mm using CDM-ISO-MONT jacks with springs design to take approximately 4000kg each and giving a maximum natural frequency of 3.3Hz.

The inertia bases along with the CDM-ISO-LAT-SPECIAL floating floor form part of the box-in-box construction protecting the BBC from the noise and vibration created by the generators.

The generator room is located near to several studios and as such it was imperative to ensure that noise and vibration from the generators do not disturb the broadcasting capabilities of the BBC.



CASE STUDY – CDM-ISO-MACHINE

CDM-UK
 PO Box 7035
 Melton Mowbray
 Leics LE13 1WG



noise & vibration control

T: + 44 (0) 1664 482486
 F: +44 (0) 1664 482487
 E: info@cdm-uk.co.uk
 www.cdm-uk.co.uk