

Amylum Aalst, BE

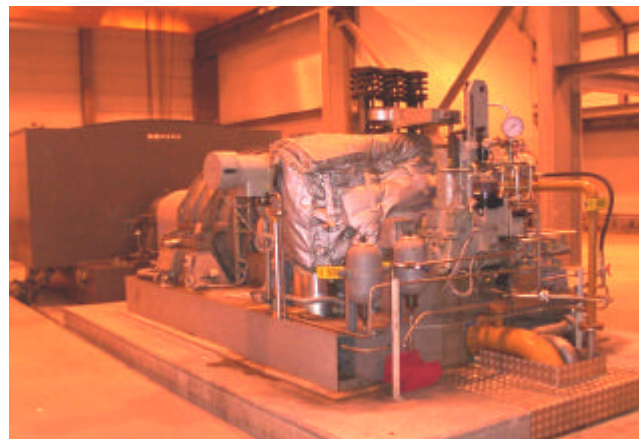


CDM-ISO-MACHINE-FLOAT 4Hz CDM-CHR-B4 Springboxes

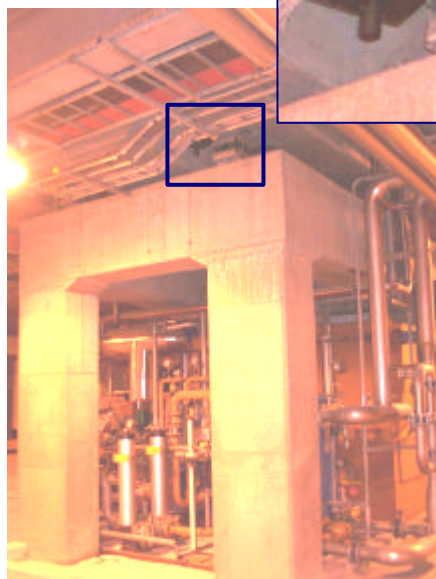


Job Type	Isolation of a steam turbine and generator set in a starch production factory
Weight	1650 kN
Main Contractor	AVIP-CDM
Engineering Consultant	Stranger

In May 1998, AVIP-CDM - the Belgian distribution company of CDM - was contacted to isolate a Siemens steam turbine and generator set used for the production of starch in the factory unit Amylum in Aalst, Belgium.



Detail of CDM-CHR-B4 springbox on top of RC beam structure



The generator set was supported on a structure, consisting of

- a **support structure in RC** beams and columns, with (approx.) overall dimensions length:9m width:4m height: 3m
- **8 precompressed CDM-ISO-CHR-B4 springboxes**, placed on top of this basic structure, with a design deflection of approx. 15mm and no inner springs
- an **8-shaped RC structure of beams** with height = approx. 0.8m, placed on top of the springboxes

The machine is **completely decoupled from the surrounding RC floor** by an air gap.



Characteristics of the setup

- Total weight of the machine + suspended concrete base (beam structure): approx. 165 tons
- Nominal rotation speed of the generator set: 1500 rpm
- Dynamic force to take into account: 11200 N
- Output: 10 MW

CASE STUDY – CDM-ISO-INDUSTRY

CDM-UK
PO Box 7035
Melton Mowbray
Leics LE13 1WG



noise & vibration control

T: + 44 (0) 1664 482486
F: +44 (0) 1664 482487
E: info@cdm-uk.co.uk
www.cdm-uk.co.uk