

The Pigalle Club, London



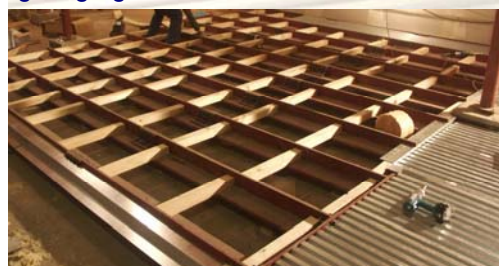
Floating Floors

CDM-ISO-SEB, CDM-ISO-BOX

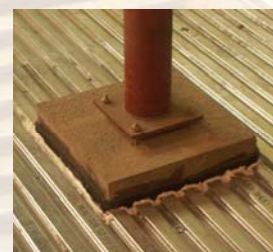
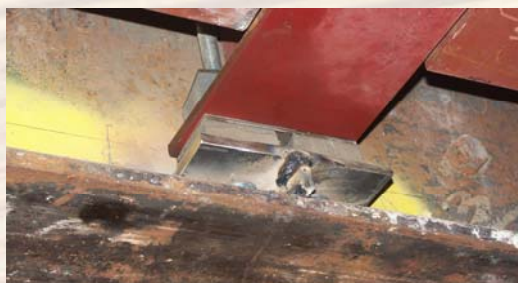
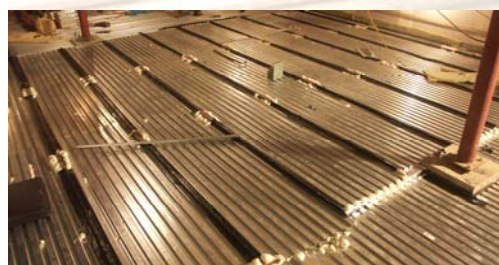
Client Vince Power Music Group
Architect Stephen Donald Architects
Interior Designer Shaun Clarkson ID
Acoustic Consultant Paul Gillieron Acoustic Design
Acoustic Design Load 4MN

The Pigalle Club, on Picadilly directly adjacent to Picadilly Circus, is a new live music venue, chic restaurant and cocktail bar. The club shares a fire exit staircase with the Jermyn Theatre and there is less than 8 metres between the club and fire exit door which leads straight into the theatre.

Paul Gillieron Acoustic Design specified that the new club had to be fully isolated from the supporting structure to ensure that the club did not disturb theatre performances. CDM-UK supplied and installed many systems including elasomer bearings for the mezzanine structure, a high performance floating foundation floor that supported the perimeter walls, spring hangers for the ceiling and suspended lighting rig etc...



One of the more challenging features of the design was to span across weak parts of the supporting structure. Steel T-beams were used to span >5m and in these areas the floating foundation slab was reduced in thickness to 50mm.



CASE STUDY – CDM-ISO-STRUCTURE

CDM-UK
 PO Box 7035
 Melton Mowbray
 Leics LE13 1WG



noise & vibration control

T: + 44 (0) 1664 482486
 F: +44 (0) 1664 482487
 E: info@cdm-uk.co.uk
 www.cdm-uk.co.uk