

Kingston Rotunda, UK





Floating Floor

CDM-ISO-LAT-SPECIAL



Main Contractor
Architect
Acoustic Consultant
Area

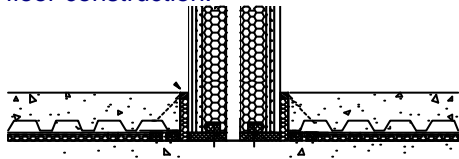
Costain
PRC Fewster Architects
Hoare Lea Acoustics
1000m²

Kingston Rotunda contains a new multi-cinema complex right in the heart of the bustling centre of Kingston in London, inside the architecturally protected Bentall's factory building.

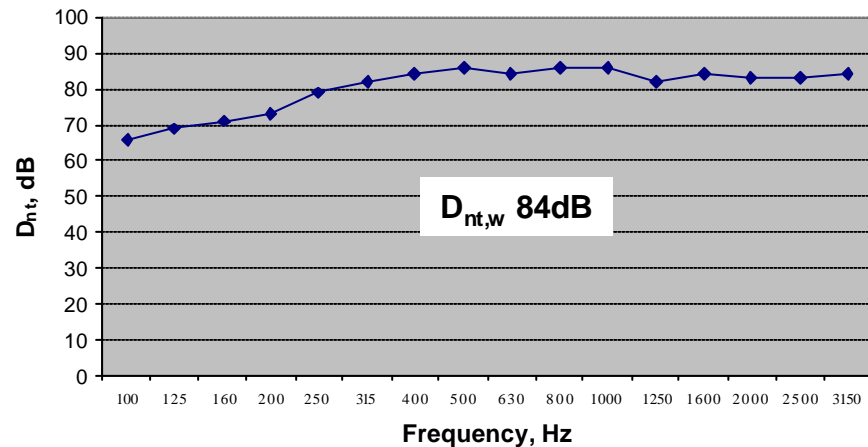
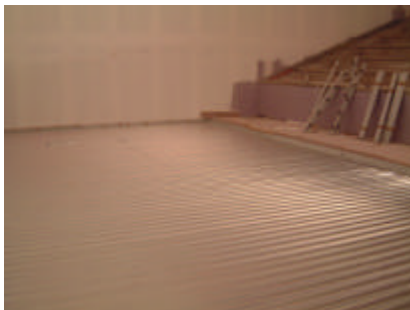
The complex consists of 5 sets of vertically stacked cinemas and the upstairs cinemas required concrete floating floors to provide adequate sound insulation.

To provide a quick to install and cost effective solution that was able to meet the stringent performance requirements, CDM-UK utilised the CDM-ISO-LAT-SPECIAL system supporting metal shuttering. The shuttering optimised the airspace beneath the concrete floating floor whilst reducing the number of isolators required to support the floor.

The system was also developed to incorporate steps and ramps in the floor construction.



As the floating floor was installed after the plasterboard shell of the cinema, the plasterboard walls were supported off the CDM-ISO-FIX system which was designed to meet the same natural frequency as the floating floor.



Hoare Lea carried out a sound insulation test which gave an overall sound insulation of 84dB $D_{nt,w}$ with excellent low frequency performance.

The final construction was:

- 100mm concrete floating slab
- 70mm airspace
- 150mm base slab
- Heavy hung ceiling with 2 layers of plasterboard.

CASE STUDY – CDM-ISO-FLOOR

CDM-UK
 PO Box 7035
 Melton Mowbray
 Leics LE13 1WG



T: + 44 (0) 1664 482486
 F: +44 (0) 1664 482487
 E: info@cdm-uk.co.uk
 www.cdm-uk.co.uk