

Gaiety Theatre, Sligo, IR



Floating Floor
CDM-ISO-LAT



Main Contractor
Architect
Acoustic Consultant
Area

John Sisk & Son
Newenham Mulligan & Associates
NES
600m²

The Gaiety Theatre in Sligo, on the beautiful west coast of Ireland, now boasts 5 new cinemas. The cinemas were built in an existing building directly beneath residential flats.

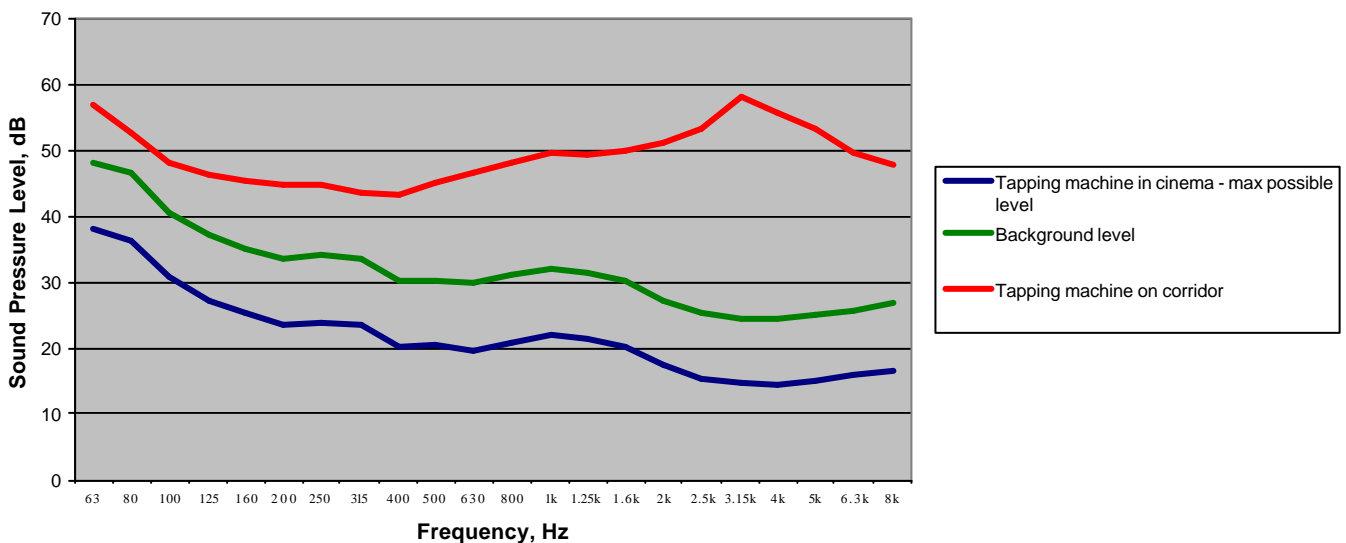
The acoustic consultants specified that each cinema should be built off a floating floor to create a box-in-box construction.

CDM-UK designed the floating floor using the ISO-LAT system, with a standard rail spacing at 600mm centres and additional stiffer rails under raked seating supports and perimeter walls. This provided a quick and extremely cost effective solution.

Timber formwork was then fixed into the rails and metal edge closures fixed into the timber to form the perimeter formwork for the concrete. Polythene was then rolled across each cinema floor to ensure that there was no grout leakage, therefore making sure that the concrete floating floor was completely de-coupled from the supporting substrate.



To check whether the floating floor was fully de-coupled a tapping machine test was carried out. Initially the tapping machine was placed in the corridor outside the cinema and measurements taken in a space directly beneath. The tapping machine was clearly audible. When the tapping machine was placed on the cinema floating floor it was completely inaudible in the lower space. The measurements showed that the background noise level had not been increased at all when the tapping machine was placed on the cinema floor and therefore an assumption was made that the noise level from the tapping machine must be at least 10dB below the background noise level. It was clear that the floating floors were working well and this has been proven now the project has been completed as the films are completely inaudible in the flats directly above.



CASE STUDY – CDM-ISO-FLOOR

CDM-UK
PO Box 7035
Melton Mowbray
Leics LE13 1WG



T: + 44 (0) 1664 482486
F: +44 (0) 1664 482487
E: info@cdm-uk.co.uk
www.cdm-uk.co.uk