

# Brighton Marina, UK



**Floating Floor**  
**CDM-ISO-T-SPECIAL**



**Main Contractor** John Sisk & Son  
**Architect** Webb Gray & Partners  
**Acoustic Consultant** Sharps Redmore  
**Area** 1800m<sup>2</sup>

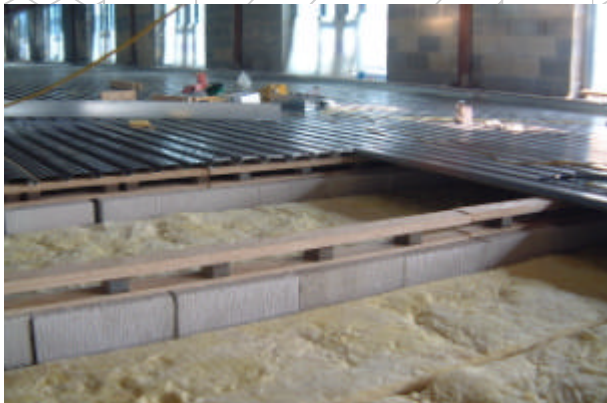
Boasting wonderful views of Brighton Marina, The Waterfront Project is one of a new breed of multi-functional buildings.

Lower floors offer restaurants, clubs and bars to add to the already vibrant Marina night life, whilst upper floors are dedicated to providing the highest standard of hotel accommodation.

An integral part of the acoustic design was to protect hotel residents from the noise generated in the restaurants clubs and bars.

The acoustic consultants called for a concrete floating floor with a maximum natural frequency of 12Hz (including for the stiffness of air).

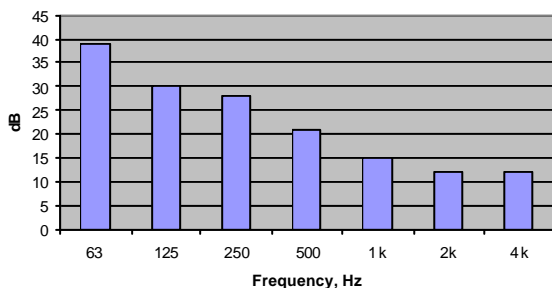
The architects also called for the void beneath the floor to be large to accommodate services and changes in finished floor levels.



CDM-UK developed a bespoke system, ISO-T-SPECIAL, which allowed the large voids to be accommodated whilst minimising cost and speed of installation. Metal decking spans between isolation rails that are in turn supported off block-work.

In addition to the main floating floor, a corridor floating floor was required that was totally accessible, whilst allowing the void beneath the floor to be free from supports. CDM-UK designed a system that used Unistrut, CDM-CR materials and fibre-cement composite panels to achieve this stringent practical and acoustic requirements.

Acoustic measurements showed that with a white noise signal of 101dB(A) in the restaurant and bar area the following spectrum was measured in a hotel bedroom.



## CASE STUDY – CDM-ISO-FLOOR

CDM-UK  
PO Box 7035  
Melton Mowbray  
Leics LE13 1WG



T: + 44 (0) 1664 482486  
F: +44 (0) 1664 482487  
E: info@cdm-uk.co.uk  
www.cdm-uk.co.uk